



The N6QW Simple SSB XCVR

Pete, N6QW| Presented to the VWS| Wednesday March 17, 2021

How did the Simple SSB Evolve?

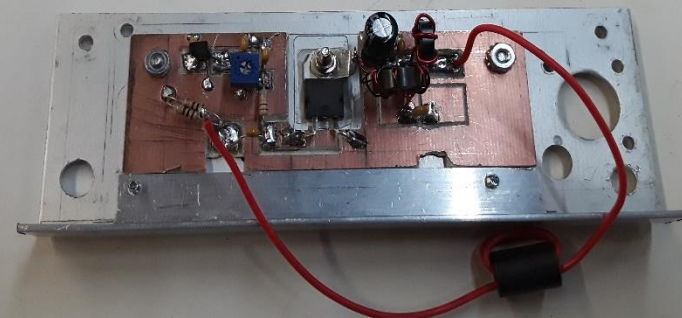
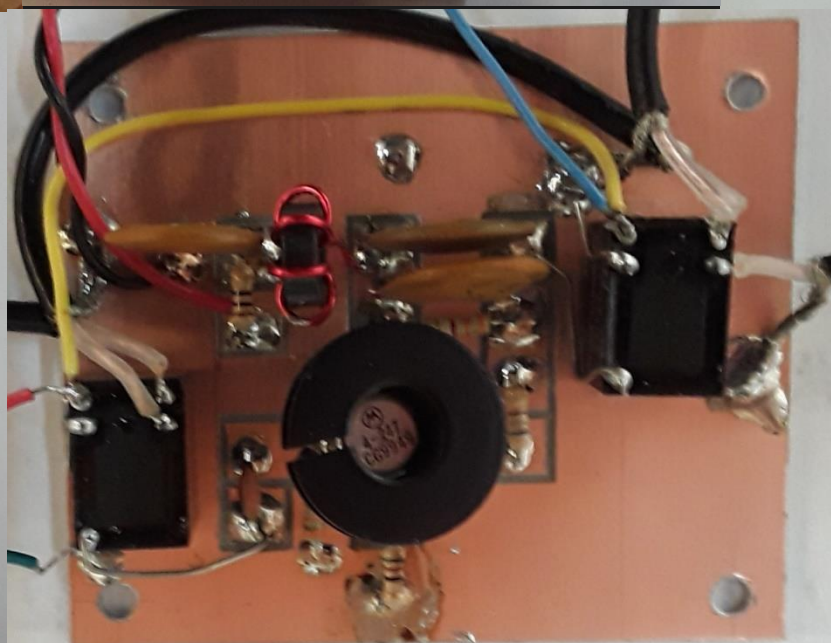
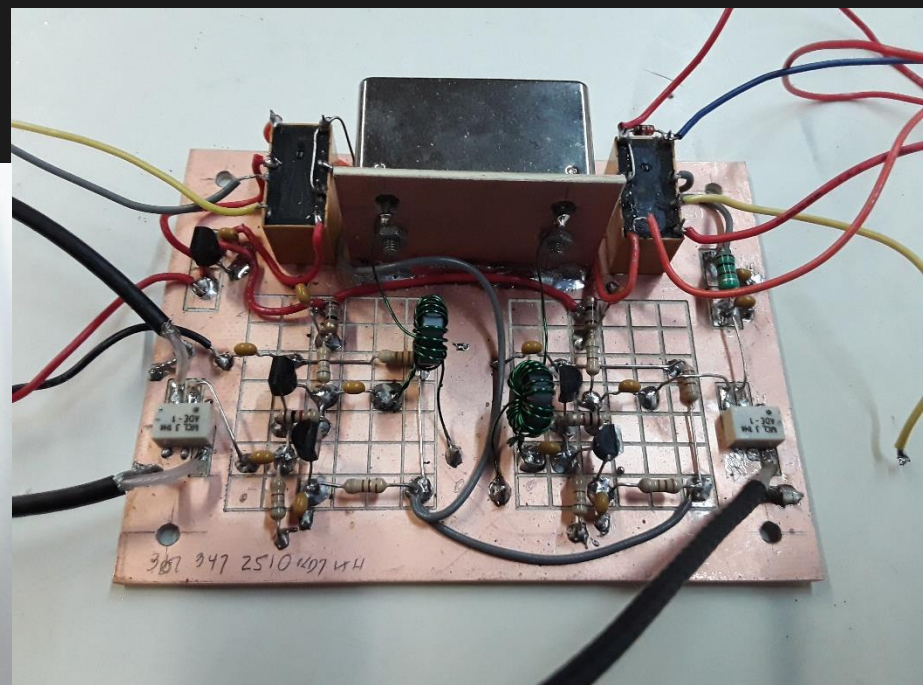
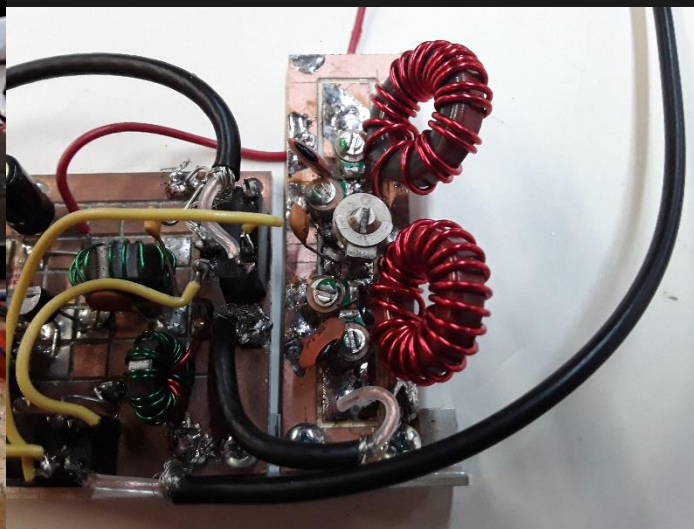
Had the Time, Many Junk Modules, I was Bored, How to do More with Less!

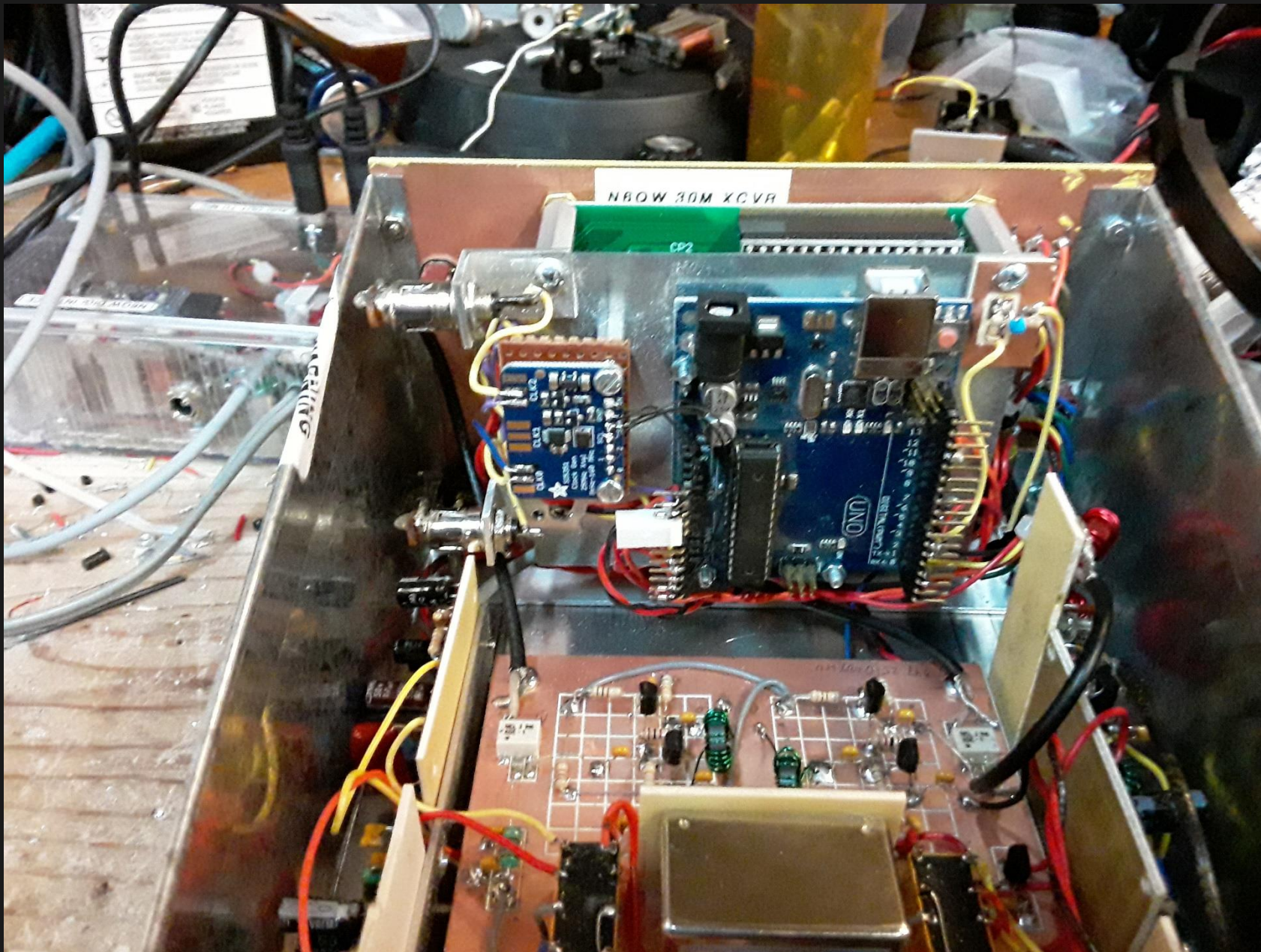
The Simple SSB Transceiver!

- An Experimenter's Platform!
- Changes Encouraged!
- Learn, don't just build!
- No Race Here!
- Design, then Build!
- Document and Keep on Track!



Simple SSB

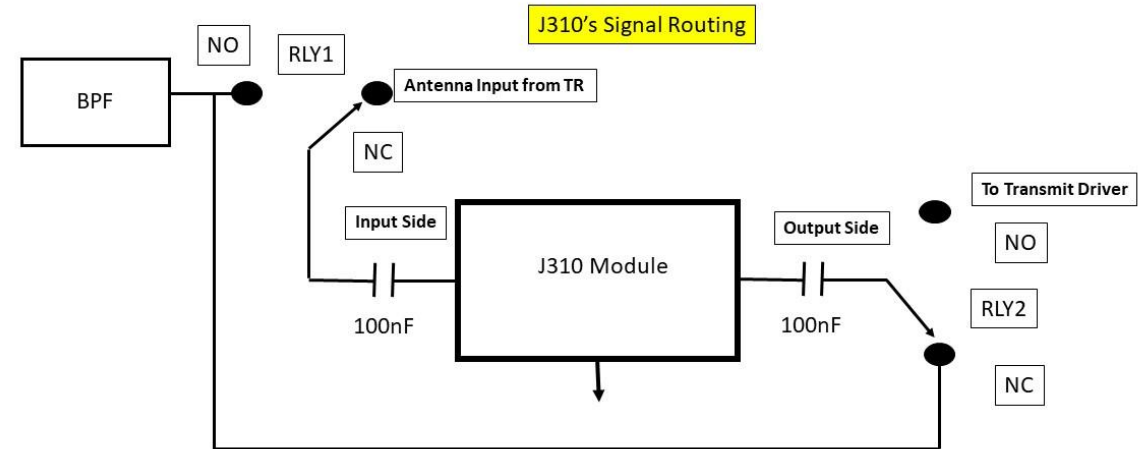
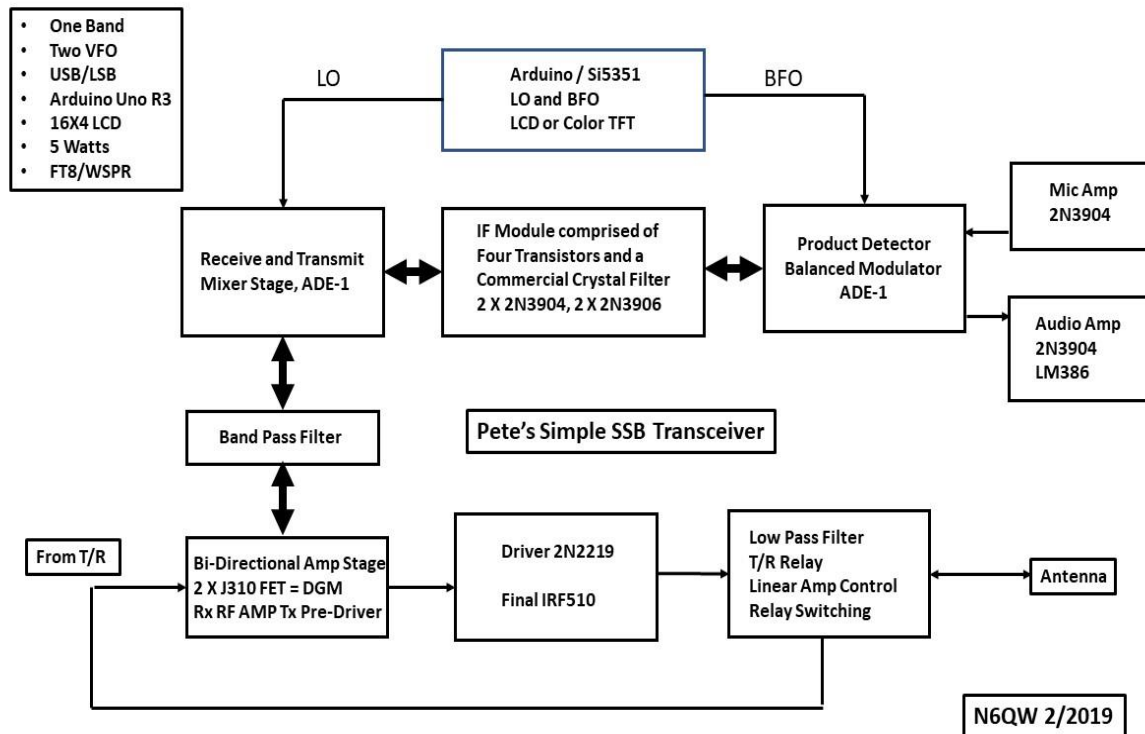
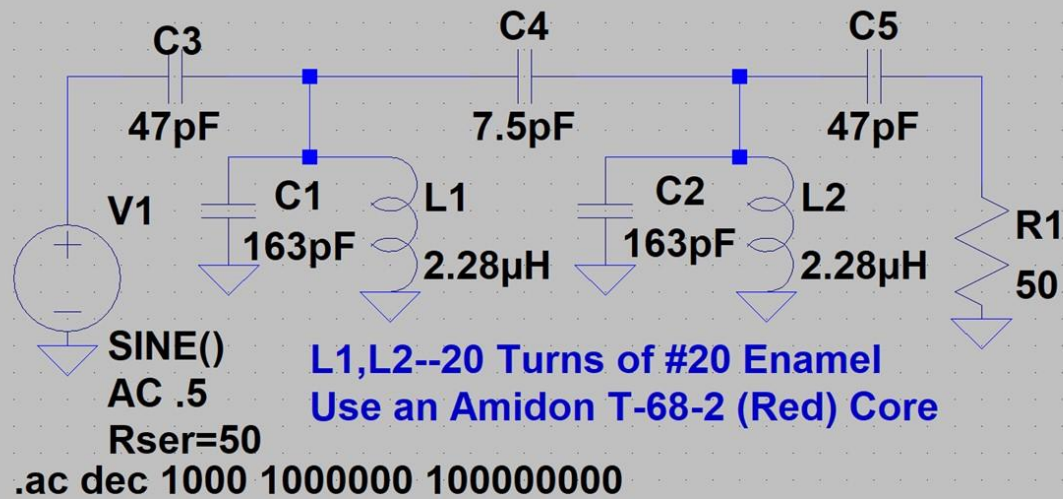




View From Behind

- Unit Assembly
- DFMA
- Service Access
- Color Code
- Ventilation
- Common Matl's
- Color Matters!

40M Band Pass Filter



Notes: With the relays in the NC position signals from the Antenna TR are routed through the Amp Stage and then sent on to the Band Pass Filter. With RLY1 & RLY2 (12VDC SPDT) energized the SSB Signal from the Band Pass Filter is amplified and then sent on to the Driver Stage

N6QW 2/2019

The Homebrew Secret Handshake

Before Applying Any Power:

- Check Right Part, Right Place
- Check for Shorts, Solder Bridges
- Check Part Polarities (NPN/PNP)
- Check Power Polarities
- Check for Power Connections
- Check for “Cold Solder Joints”
- Perform above Checks 2X
- Plug and Pray!

Have Fun!

